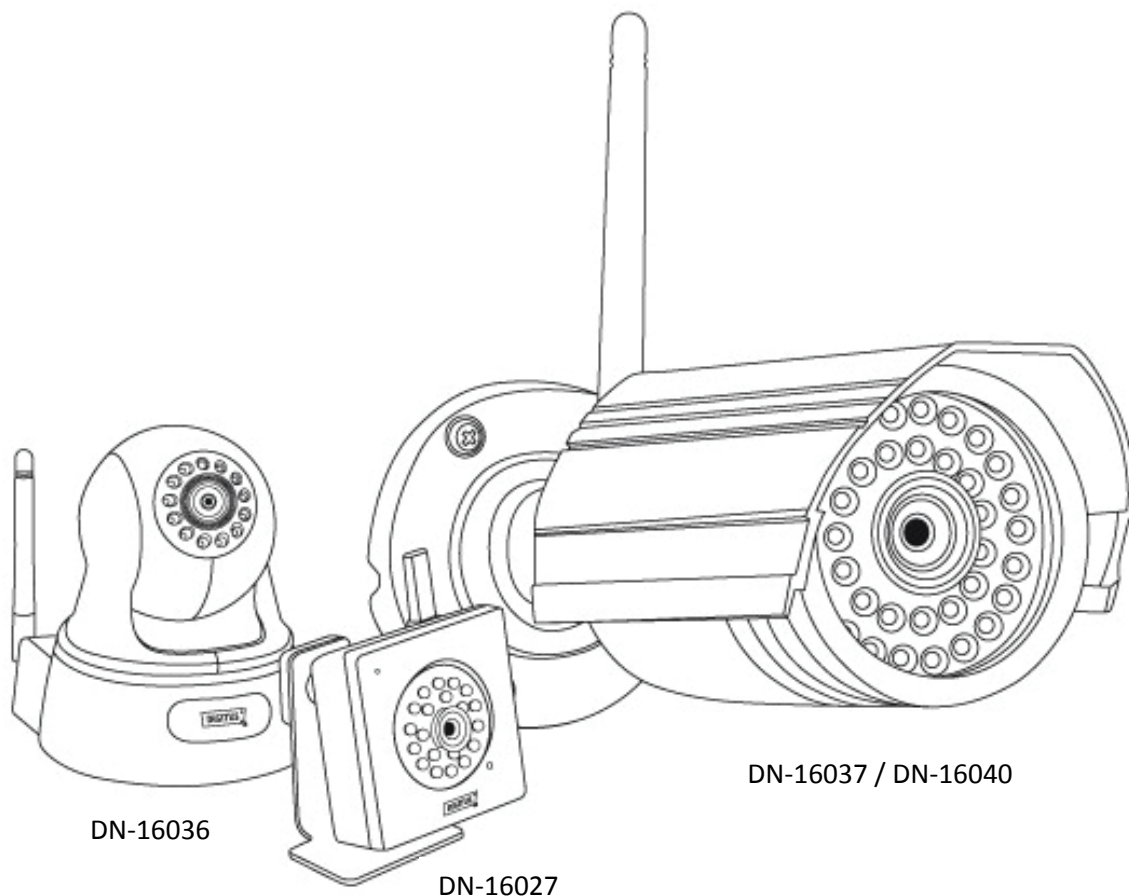
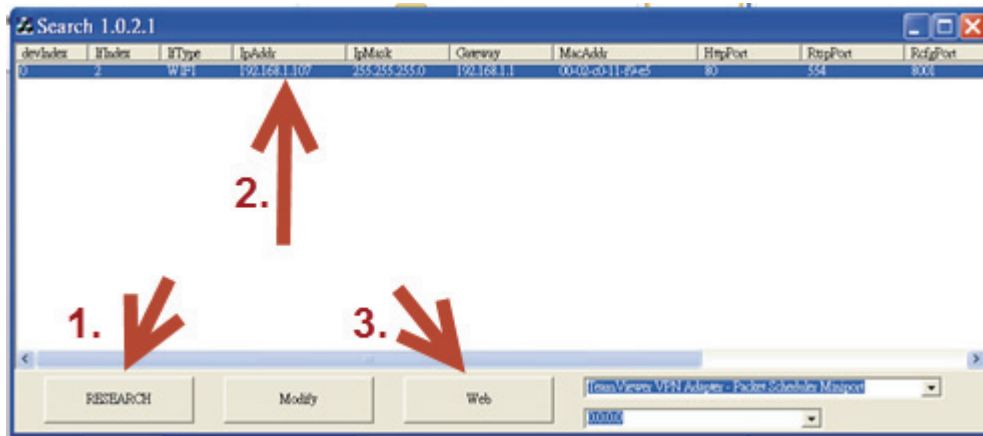




# **Plug&View IP-camera Instruction firmware update**



1. Unpack the ZIP archive with the necessary files for the update into a directory on your PC. Change into the unpacked directory "Search Tool".
2. First, install the WinPcap\_4\_1\_3.exe and then start the program "Search.exe".
3. Please make sure that your PC and the camera are in the same network. Click (1) "Research" to search for the Plug & View cameras on your network.

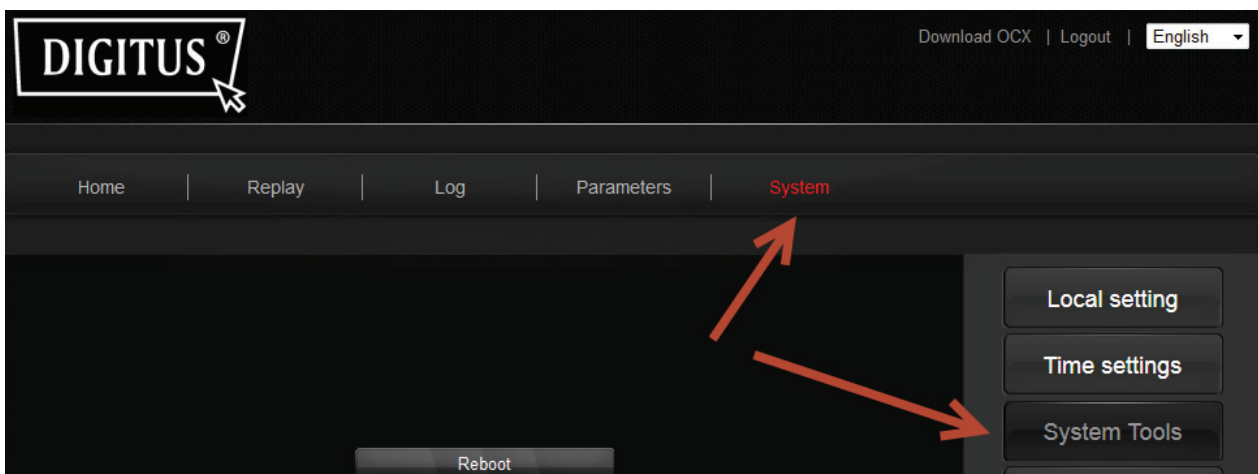


4. If you have only one Plug & View Camera, it appears as a single entry in the list. Select (2) the camera to install this update. Then click (3) "Web" to launch your browser to the login screen for the user interface of the camera.

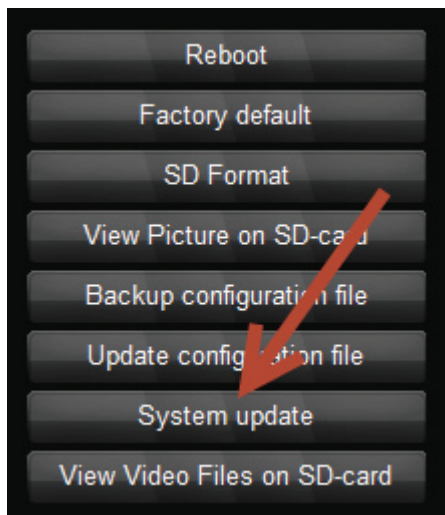
**WARNING: This firmware update supports MS Internet Explorer (Version 8 & 9) only! In case you have Firefox or Chrome as your default browser, open Internet Explorer and manually type in the IP address of your camera into the address field. For future updates Internet Explorer, Firefox, Chrome and Apple Safari are supported.**

In the login window for the camera type both "admin" as "Username" and "Password". Confirm your entries with "Login".

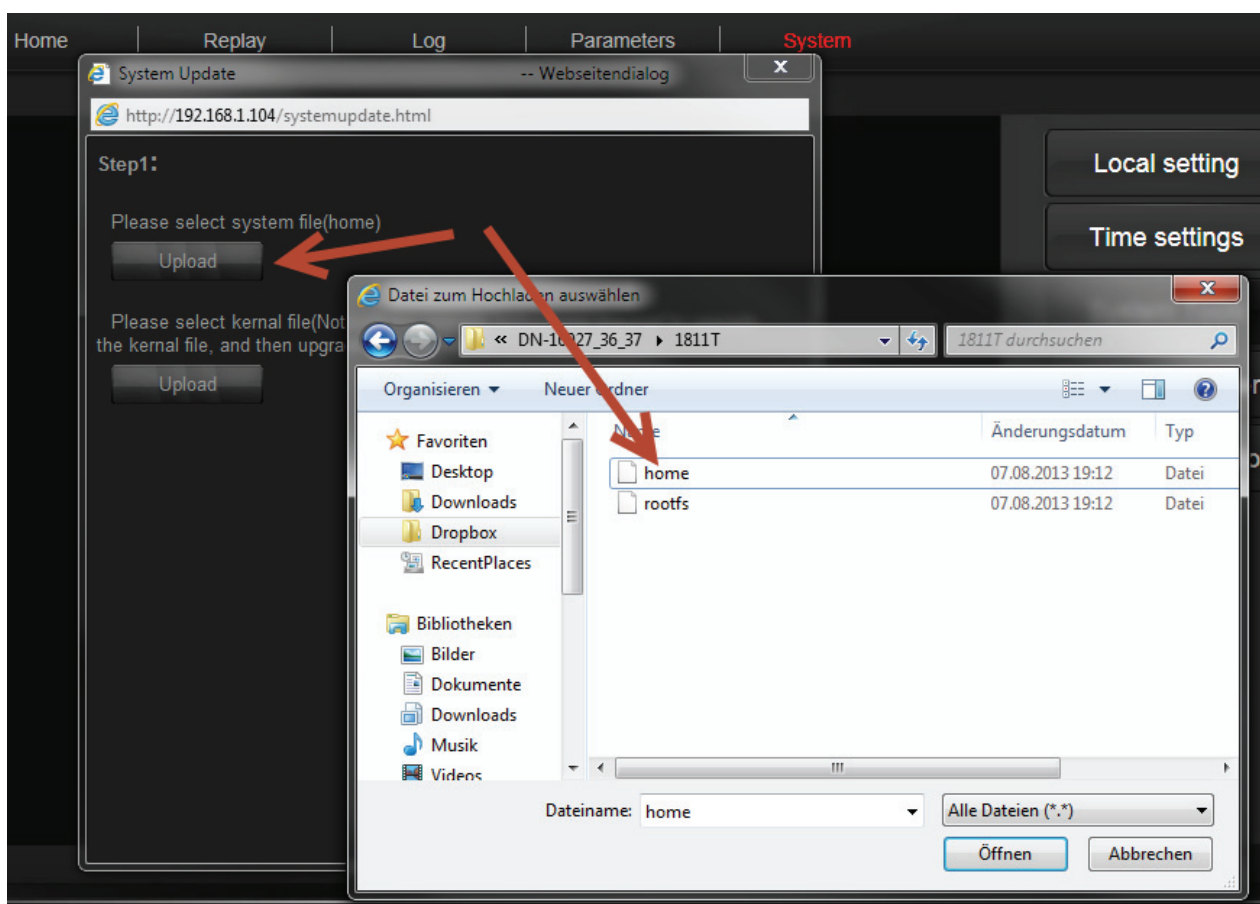
5. Next you will see the user interface of your Plug&View camera. Click on "System" in the horizontal menu and then on "System Tools" in the vertical options.



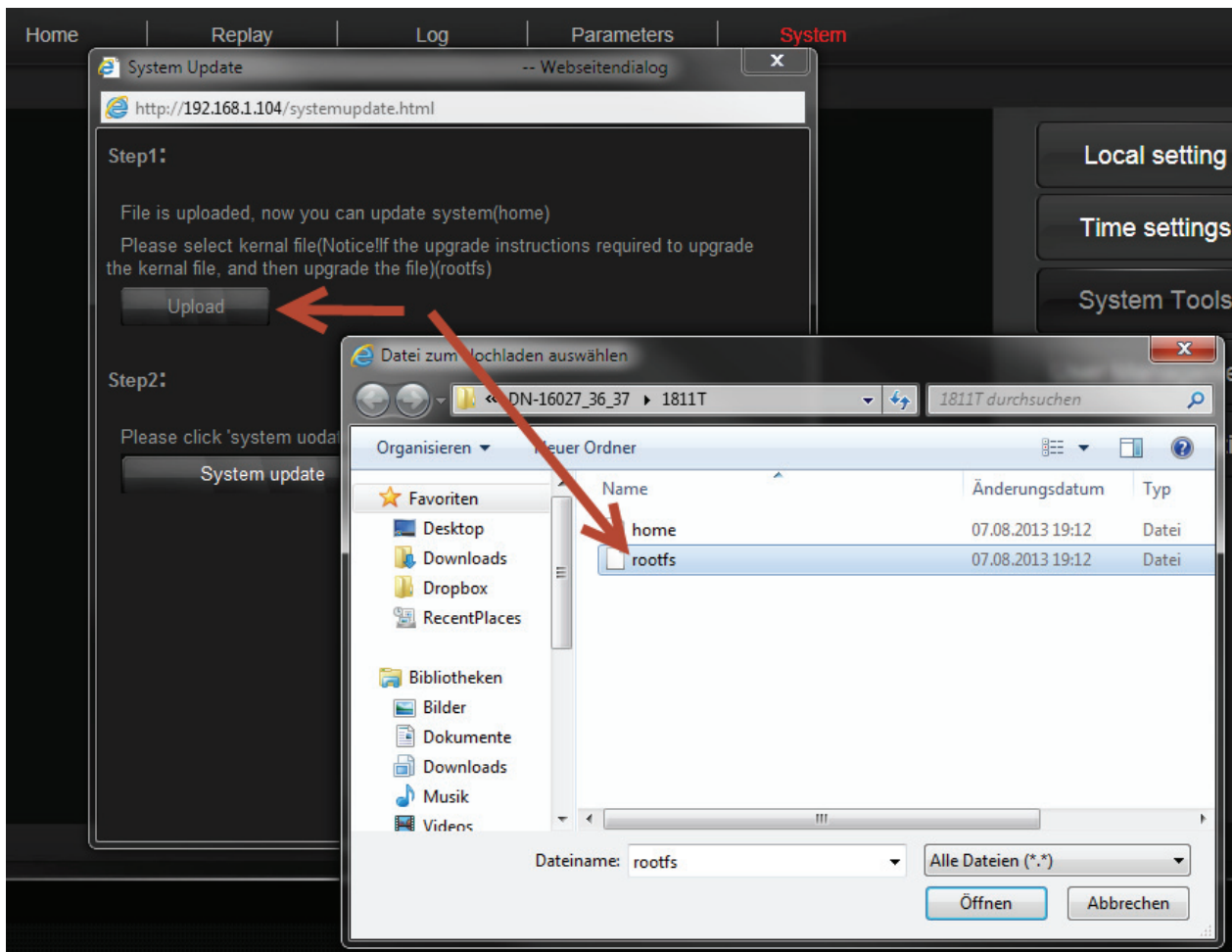
Next click on "System Update".



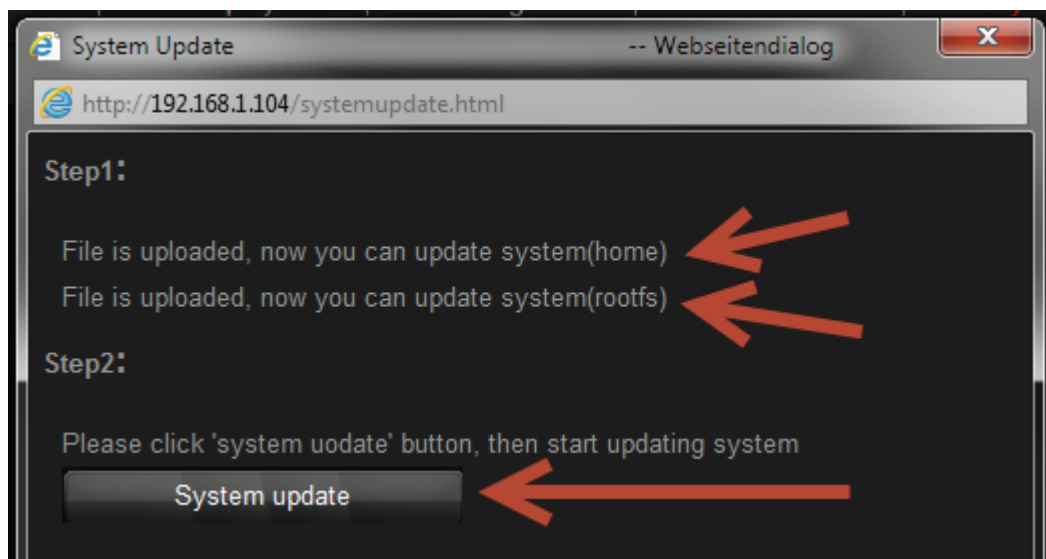
6. In the window click the "Upload" button below "Step 1" and select the upgrade file "home" in the directory containing the unzipped firmware update. Click "Open". The file is then transferred to the camera. You will see a message that the file was saved.



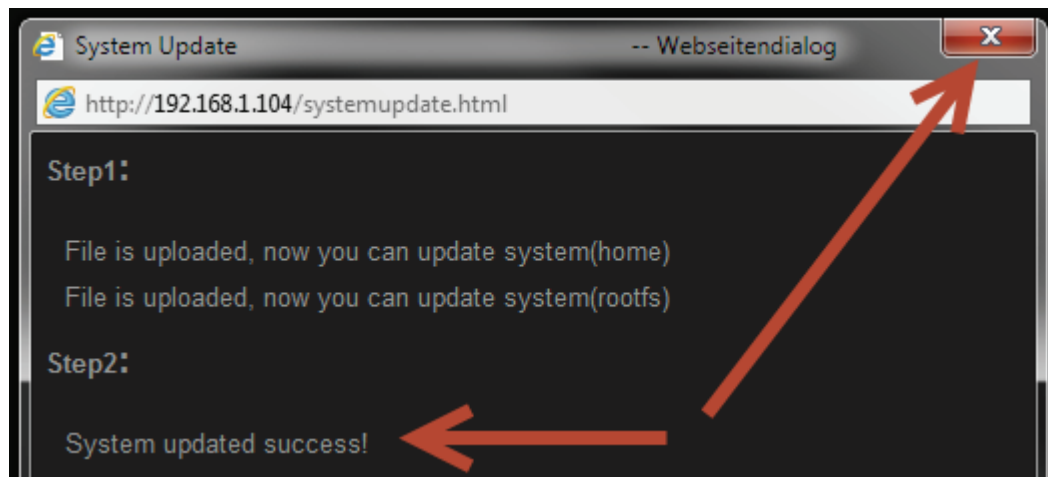
7. Click the "Upload" button **again** and now select the upgrade file "rootfs" in the directory containing the unzipped firmware update. Click "Open". The file is then transferred to the camera. You will see a message that the file was saved.



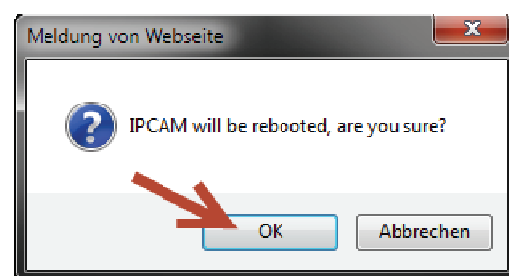
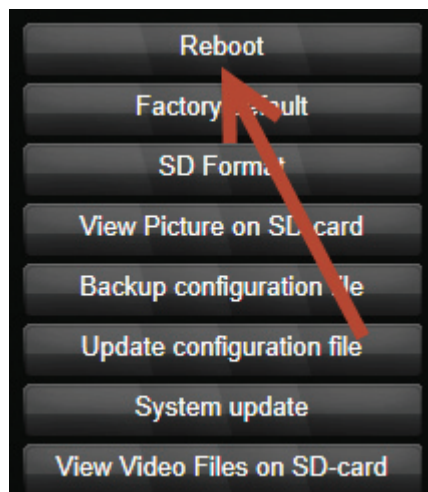
8. Please make sure that both ("home" and "rootfs") were saved for the firmware update. Next click on "System update" below "Step 2" and wait a few minutes for the system until the update progress stops at 100%.



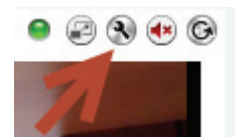
9. When you see the message „System updated success!“ ...



... close this window. In the system menu of the camera interface click on "Reboot" and confirm whether the camera should be rebooted with "OK".



10. Before you close the browser window or tab, **please clear your browser's cache**, wait about 30 seconds until the camera has started and then visit "plug-view.com" with "LOGIN" to your account.
11. Use the "Settings" button on the top right of the video screen, to access the user menu of the camera again to make further adjustments as needed.



Enjoy your Plug&View IP-camera!